

Introduction to Dissolution

Dissolution Essentials - Chrom4: The Dissolution Essential Specialists

Chrom4 fulfills the various needs of the dissolution industry by carrying a full line of consumables and accessories for various brands and models of dissolution testing equipment.

Chrom4 provides the highest quality products to the entire pharmaceutical industry. All of their products are both USP and equipment manufacturer compliant.

The product line consists of items specifically designed to fit the many different brands of dissolution testing equipment. Dissolution Essentials manufactures products dedicated to specific instruments, such as Distek, Sotax, VanKel and Hanson, as well as many other dissolution manufacturers products.

In this section, we have included the most common dissolution accessories.



What can you expect from us?

- Dissolution Vessels & Covers
- Baskets, Basket Shafts & Spin Shaft Accessories
- Capsule Sinkers
- Paddles
- Sampling Cannula & Filters
- Tubing
- Disintegration Testing
- Intrinsic Dissolution
- USP Apparatus 3
- USP Apparatus 5 & USP Apparatus 6
- Dissolution Media

For more information, please visit Chrom4.com and discover why Chrom4 is the superior alternative for dissolution essentials.



Vessels

Some suppliers offer “one size” generic vessels for all dissolution baths, however, replacing a vessel with one not specifically designed for the instrument could impair vessel centering. Also, larger or smaller vessel inside diameters can change hydrodynamics. Both variables could impact dissolution rates.

Chrom4 dissolution vessels comply with USP (711) and with the associated original equipment manufacturers dimensional specifications. This is extremely important because the vessels associated with various dissolution baths are not dimensionally the same.

On top of offering standard vessels designed for manufacturers dimensional specifications, Chrom4 offers High Precision Vessels too.

High Precision Vessels

Vessels provide ultimate dimensional accuracy.

- Sphericity - less than .10mm
- Spherical radius - 50.03+/- 0.08mm
- Cylindricity - less than 0.17mm

High Precision vessels offer ultimate control of dissolution variables and assist with dissolution instrument calibration to ASTM E 2503-07 requirements.

High Precision Vessel Key Features:

- Fits directly into the dissolution bath
- Does not require Centering Ring
- Comes standard with individual certificates
- Inside bottom extremely close to true hemisphere
 - Sphericity
- Extremely tight tolerance of radius of inside bottom
- Inside cylindrical body extremely close to true circle
 - Circularity
- Agreement of both centers of cylindrical body and bottom
 - Concentricity
- Inside cylindrical body extremely close to true cylinder
 - Cylindricity
- Vessel center nearly perfect vertical and guaranteed by the concentricity
- Extremely tight tolerance of inside diameters of cylindrical body
- Extremely tight vessel-to-vessel variation in configuration
- ASTM, USP, BP, EP, JP and associated pharmacopeia compliant

Ordering Information - High Precision Vessel

Part No. (each)	Description
Distek	
C4-DKC900HP	High Precision Clear glass 1000ml vessel
C4-DKA900HP	High Precision Amber glass 1000ml vessel

Part No. (each)	Description
Agilent (Varian/Vankel)	
C4-VKC900HP	High Precision Clear glass 1000ml vessel
C4-VKA900HP	High Precision Amber glass 1000ml vessel
C4-VKCTC900HP	High Precision Clear glass 1000ml vessel, TruCenter
C4-VKATC900HP	High Precision Amber glass 1000ml vessel, TruCenter

Part No. (each)	Description
Hanson	
C4-HAC900HP	High Precision Clear glass 1000ml vessel
C4-HAA900HP	High Precision Amber glass 1000ml vessel

Part No. (each)	Description
Sotax	
C4-STC900HP	High Precision Clear glass 1000ml vessel
C4-STA900HP	High Precision Amber glass 1000ml vessel



Ordering Information - Standards Vessels

Part No. (each)	Description	OEM Ref
Distek		
C4-DKC200K	200 ml Clear Glass Vessel	3100-0095
C4-DKA200K	200 ml Amber Glass Vessel	3100-0095-AMB
C4-DKCSV250	250 ml Clear Glass Vessel, Chinese Pharmacopeia	–
C4-DKASV250	250 ml Amber Glass Vessel, Chinese Pharmacopeia	–
C4-DKAGLA500	500 ml Clear Glass Vessel	3010-0040
C4-DKAGLA	500 ml Amber Glass Vessel	3010-0040-AMB
C4-DKC900S	1000 ml Clear Glass Vessel, Non Acculign Ring	3010-0093
C4-DKA900	1000 ml Amber Glass Vessel, Non Acculign Ring	3010-0023
C4-DKC900CRS	1000 ml Clear Glass Vessel, with Acculign Ring	3010-0093
C4-DKA900CR	1000 ml Amber Glass Vessel, with Acculign ring	3010-0093-AMB
C4-DK900SPK	1000 ml Clear Glass Vessel, Peak	3010-0550
C4-DKA900PK	1000 ml Amber Glass Vessel, Peak	3010-0550-AMB
C4-DKCT900	1000 ml Clear Glass Vessel, Teflon Coated, with Acculign Ring	3010-0002-T
C4-DKCP900	1000 ml Clear Glass Vessel, Premier	3010-0096
C4-DKAP900	1000 ml Amber Glass Vessel, Premier	3010-0096-AMB
C4-DKCTP900	1000 ml Clear Glass Vessel, Premier, Teflon Coated	3010-0096-T
C4-DKPLA900	1000 ml Clear Plastic Vessel	3350-0095
C4-DKA900P	1000 ml Amber Plastic Vessel	3350-0095-AMB
C4-DKGLA02K	2000 ml Clear Glass Vessel, with Acculign Ring	3010-0285
C4-DKAGLA02K	2000 ml Amber Glass Vessel, with Acculign Ring	3010-0327-AMB
C4-DKGLA2PK	2000 ml Clear Glass Vessel, Peak	–
C4-DKAGLA2PK	2000 ml Amber Glass Vessel, Peak	–
C4-DKGLA04K	4000 ml Clear Glass Vessel with Acculign Ring	3010-0286
C4-DKAGLA04K	4000 ml Amber Glass Vessel with Acculign Ring	3010-0286-AMB
C4-DKGLA4PK	4000 ml Clear Glass Vessel, Peak	–
C4-DKAGLA4PK	4000 ml Amber Glass Vessel, Peak	–
C4-DKPCR	(Acculign Ring) Plastic Centering Ring	3350-0096
C4-DKVSCLIP	Vessel Hold Down Clip (for 6300 and 2100 Series)	2821-0257



Other vessel sizes available.
 We supply dissolution vessels & covers for other dissolution testing (Caleva, Erweka, Pharmatest and Zymark). Please enquire.



Ordering Information - Standard Vessels (continued)

Part No. (each)	Description	OEM Ref
Hanson		
C4-HAGLA150R	150 ml Clear Glass Vessel	72-600-573
C4-HAAGLA150R	150 ml Amber Glass Vessel	72-600-583
C4-HAGLA150F	150 ml Clear Glass Vessel, Flat Bottom	74-105-152
C4-HAAGLA150F	150 ml Amber Glass Vessel, Flat Bottom	74-105-162
C4-HRCV250	250 ml Clear Glass, Chinese Pharmacopeia	74-105-280
C4-HAACV250	250 ml Amber Glass, Chinese Pharmacopeia	74-105-281
C4-HAGLA500	500 ml Clear Glass Vessel	–
C4-HAAGLA500	500 ml, Amber Glass Vessel	–
C4-HAC900S	1000 ml Clear Glass Vessel, USP, Precision	72-600-510
C4-HAA900S	1000 ml Amber Glass Vessel, USP, Precision	72-600-556
C4-HAC900P	1000 ml Plastic Clear Vessel, USP, Precision	91-030-003
C4-HAA900P	1000 ml Plastic Amber Vessel, USP, Precision,	91-030-004
C4-HAC900PK	1000 ml Clear Glass Vessel, Peak, USP, Precision	95-590-047
C4-HAA900PK	1000 ml Amber Glass Vessel, Peak, USP, Precision	95-590-048
C4-HAC200	2000 ml Clear Glass Vessel, USP, Precision	72-600-509
C4-HAAGLA02K	2000 ml Amber Glass Vessel, USP, Precision	72-600-580
C4-HRGLA2PK	2000 ml Clear Glass Vessel, Peak	–
C4-HAAGLA2PK	2000 ml Amber Glass Vessel, Peak	–

C4-HRCNTRNG	Vessel Centering Ring (1 & 2 L Vessels)	73-100-550
-------------	---	------------

Part No. (each)	Description	OEM Ref
Sotax		
C4-STCSV250	250 ml mini Chinese Clear Glass Vessel	9650
C4-ASTCSV250	250 ml mini Chinese Amber Glass Vessel	9650-2
C4-SXC900S	1000 ml Clear Glass Vessel	2503
C4-STA900PK	1000 ml Amber Glass Vessel	2503-2

Other vessel sizes available.

We supply dissolution vessels & covers for other dissolution testing (Caleva, Erweka, Pharmatest and Zymark). Please enquire.



C4-HAGLA500



C4-HAA900S



C4-HAC900S



C4-HAC900P



C4-HAC900PK



C4-HAC200



C4-HAA900P



C4-VKC900CRSPK

Ordering Information - Standard Vessels (continued)

Part No. (each)	Description	OEM Ref
Agilent (Varian/Vankel)		
C4-VKGLA100	100 ml TruCenter, Clear Glass Vessel	–
C4-VKAGLA100	100 ml TruCenter, Amber Glass Vessel	–
C4-VKC200RB	200 ml TruCenter, Clear Glass Vessel	12-5033
C4-VKAGLA200-TC	200 ml TruCenter, Amber Glass Vessel	–
C4-VKC900CRS	1000 ml TruCenter, Clear Glass Vessel for 7025 and 7030	–
C4-VKCA900CRS	1000 ml TruCenter, Amber Glass Vessel for 7025 and 7030	–
C4-VKC900CRSPK	1000 ml TruCenter, Clear Glass Vessel with Collar for 7025 and 7030	12-5035
C4-VKCA900CRSPK	1000 ml TruCenter, Amber Glass Vessel with Collar for 7025 and 7030	12-5120
C4-VKTC900PK	1000 ml TruCenter Clear Glass Vessel, Peak, for V-Series Bath	12-5125
C4-VKTC900PK	1000 ml TruCenter Clear Glass Vessel, Peak,with Collar, for V-Series Bath	–
C4-VKTC900PK	1000 ml TruCenter Clear Glass Vessel, Peak,with Collar, for V-Series Bath	–
C4-VKCTA900PK	1000 ml TruCenter Amber Glass Vessel, Peak, for V-Series Bath	–
C4-VKCTC900PK	1000 ml TruCenter Clear Glass Vessel, Peak,with Collar, for V-Series Bath	–
C4-VKCTA900PK	1000 ml TruCenter Amber Glass Vessel, Peak, with Collar, for V-Series Bath	12-5130
C4-VKCGLA02K	2000 ml TruCenter, Clear Glass Vessel, with Collar	–
C4-VKAGLA02K	2000 ml TruCenter, Amber Glass Vessel, with Collar	–
C4-VKCGLA2PK	2000 ml TruCenter, Clear Glass Vessel, Peak with Collar	–
C4-VKAGLA02K	2000 ml TruCenter, Amber Glass Vessel, Peak with Collar	–
C4-VKC100	100 ml, EaseAlign, Clear Glass Vessel	12-5040
C4-VKCA100	100 ml, EaseAlign, Amber Glass Vessel	12-5041
C4-VKGLA200	200 ml, EaseAlign, Clear Glass Vessel	12-5050
C4-VKAGLA200	200 ml, EaseAlign, Amber Glass Vessel	12-5051
C4-VKC500	500 ml, EaseAlign, Clear Glass Vessel	12-5060
C4-VKAGLA500	500 ml, EaseAlign, Amber Glass Vessel	12-5065
C4-VKC900S	1000 ml, EaseAlign, Clear Glass Vessel	12-5000
C4-VKCA900S	1000 ml, EaseAlign, Amber Glass Vessel	12-5010
C4-VKA900T	1000 ml, EaseAlign, Clear Glass Vessel, Teflon Coated	12-5020
C4-VKC900SPK	1000 ml, EaseAlign, Clear Glass Vessel, Peak	12-5500
C4-VKA900PK	1000 ml, EaseAlign, Amber Glass Vessel, Peak	12-5505
C4-VKTC900PK	1000 ml, EaseAlign, Clear Glass Vessel, Peak, Teflon coated	12-5525
C4-VK900P	1000 ml Clear Plastic Vessel	12-5200
C4-VKA900P	1000 ml Amber Plastic Vessel	12-5210
C4-VKC200K	2000 ml, EaseAlign, Clear Glass Vessel	12-5070
C4-VKAGLA02K	2000 ml, EaseAlign, Amber Glass Vessel	12-5075
C4-VKGLA2PK	2000 ml, EaseAlign, Clear Glass Vessel, Peak	12-5510
C4-VKAGLA2PK	2000 ml, EaseAlign, Amber Glass Vessel, Peak	–



C4-VKC900CRS



C4-VKC900S



C4-VKCA900S



C4-VKCA900SPK



C4-VKTC900PK



C4-VKCA900CRSPK

Ordering Information - Standard Vessels (continued)

Part No. (each)	Description	OEM Ref
Agilent (Varian/Vankel)		
C4-TAGLA100	100 ml TruAlign, Clear Glass Vessel	12-5145
C4-VKAGLA100-TA	100 ml TruAlign, Amber Glass Vessel	12-5146
C4-VKGLA200F-TA	200 ml TruAlign, Clear Glass Vessel, Flat Bottom	12-5170
C4-VKAGLA200F-TA	200 ml TruAlign, Amber Glass Vessel, Flat Bottom	–
C4-VKGLA200-TA	200 ml TruAlign, Clear Glass Vessel	12-5147
C4-VKAGLA200-TA	200 ml TruAlign, Amber Glass Vessel	–
C4-TACSV250	250 ml TruAlign, Clear Glass Vessel, Chinese Pharmacopeia	12-1452
C4-ATACSV250	250 ml TruAlign, Amber Glass Vessel, Chinese Pharmacopeia	–
C4-VKCT900	1000 ml TruAlign, Clear Glass Vessel	12-5149
C4-VKA900	1000 ml TruAlign, Amber Glass Vessel	12-5152
C4-TAC900PK	1000 ml TruAlign, Clear Glass Vessel, Peak	12-5153
C4-VKTA900PK	1000 ml TruAlign, Amber Glass Vessel, Peak	
C4-TAGLA02K	2000 ml TruAlign, Clear Glass Vessel	12-5157
C4-VKATAGLA02K	2000 ml TruAlign, Amber Glass Vessel	12-5158
C4-TAGLA2PK	2000 ml TruAlign, Clear Glass Vessel, Peak	12-5129
C4-ATAGLA2PK	2000 ml TruAlign, Amber Glass Vessel, Peak	–
C4-VKEZLBKT	Vessel Centering Bracket, 6 Replaceable Pins	12-6050
C4-VKEZLKIT	Vessel Centering Bracket Repair Kit (Set of 12 pins)	–
C4-VKEZLPEG	Vessel Centering Bracket Peg	12-6065



Universal Vessels

Glass Dissolution Test Vessels

- Manufactured from Type 1, Class A borosilicate glass
- Meets specifications of USP XXVI, Monograph <711>
- Precision formed with flat flange and hemispherical bottom
- Glass vessels are serialized
- Graduations in 50mL increments, 400mL to 1000mL

Ordering Information - Universal Vessels (not recommended)

Part No. (each)	Description	SUN-SRI Equivalent
C4100-002	1L, Clear, Ungraduated, Serialized	100 002
C4100-108	1L, Amber, Ungraduated, Serialized	100 006
C4100-006	1L, Clear, Graduated, Serialized	100 008



For reference only

Vessel Covers

Part No. (each)	Description	OEM Ref
Distek		
C4-DKCOVERD	Low Evaporation Rotary Cover, 0.53" (13.5mm) Cannula Hole Diameter	–
C4-DKCHC	Clear Hinged Cover, 0.53" (13.5mm) Cannula Hole Diameter	3250-0089
C4-DKCHCA	Amber Hinged Cover, 0.53" (13.5mm) Cannula Hole Diameter	–
C4-BKCOVERD	Clear Hinged Cover with Large Centre Hole for Easy Basket Access, 0.53" (13.5mm) Cannula Hole Diameter	3250-0070
C4-DKCOVERAD	Amber Hinged Cover with Large Centre Hole for Easy Basket Access, 0.53" (13.5mm) Cannula Hole Diameter	–
C4-HGCOVERD	Clear Low Evaporation Hinged Cover, 0.53" (13.5mm) Cannula Hole Diameter	–
C4-DKCOVDHG-SB	Clear Stationary Basket Apparatus Hinged Cover	3250-0081
C4-DKCOVPLG-7D	7th Position Cover Plug	3350-0109
C4-DKCOVPLG	Probe Hole Plug	5720-4037
C4-DKCOVCAP	Clear Cap for Basket Access Cover	3250-0019
C4-ADCOVCAP	Amber Cap for Basket Access Cover	–
C4-DKHINGE	Plastic Hinge	5560-6011

Part No. (each)	Description	OEM Ref
Hanson		
C4-HACOVERH	Low Evaporation Rotary Cover, 0.53" (13.5mm) Cannula Hole Diameter	65-233-170
C4-HACCOVERH	Clear Cover with Paddle Slot	72-500-215
C4-HAGCOVERH	Grey Cover with Paddle Slot	72-800-603
C4-HAACCOVERH	Amber Cover with Paddle Slot	–
C4-HASCOVERH	Clear Solid Cover	–
C4-HACOVERH-HG	Clear Low Evaporation Hinged Cover, 0.53" (13.5mm) Cannula Hole Diameter	95-590-046
C4-HACOVERH-LL	Low Loss Evaporation Cover, Conical Shape	–

Part No. (each)	Description	OEM Ref
Agilent (Varian/Vankel)		
C4-VKCOVERV	Low Evaporation Rotary Cover, 0.31" (7.9mm) Cannula Hole Diameter	–
C4-VKCCS	Clear Cover with Paddle Slot, 0.31" (7.9mm) Cannula Hole Diameter	12-6300
C4-VKACS	Amber Cover with Paddle Slot, 0.31" (7.9mm) Cannula Hole Diameter	12-6320
C4-VKSCOVERV	Clear Solid Cover	12-6330
C4-VKCOVERV	Clear Evaporation Cover for Dosage Delivery Module, 0.31" (7.9mm) Cannula Hole Diameter	12-6310
C4-VKCOVERV-HG	Clear Low Evaporation Hinged Cover, 0.31" (7.9mm) Cannula Hole Diameter	–
C4-VKCOVERV-LL	Low Loss Evaporation Cover, Conical Shape, 0.78" (19.8mm) Cannula Hole Diameter	12-0469
C4-VKCOVERV-LLHG	Low Loss Evaporation Hinged Cover, Conical Shape, 0.78" (19.8mm) Cannula Hole Diameter	12-6328
C4-VKCOVERV-LLSB	Stationary Basket Apparatus Low Loss Evaporation Hinged Cover, Conical Shape	–
C4-VKCOVERV-LLVS	TruCenter Low Loss Evaporation Hinged Cover, Conical Shape, 0.78" (19.8mm) Cannula Hole Diameter	12-6327
C4-VKCOVERV-LL200	Mini Vessel Cover, Conical, Low Loss for 200ml vessel, Varian/VanKel	–
C4-VKCOVHG	Clear Stationary Basket Apparatus Hinged Cover	–
C4-COVERV-6K	Clear Evaporation Cover for VK600/VK6000 Series, 0.31" (7.9mm) Cannula Hole Diameter	12-6200

Vessel Covers



C4-DKCOVERD



C4-DKCHC



C4-DKCHCA



C4-BKCOVERD



C4-DKCOVERAD



C4-DKCOVDHG-SB



C4-DKCOVPLG-7D



C4-DKCOVPLG



C4-DKCOVCAP



C4-ADCOVCAP



C4-DKHINGE



C4-HACOVERH



C4-HACCOVERH



C4-HAGCOVERH



C4-HAACOVERH



C4-HASCOVERH



C4-HACOVERH-HG



C4-VKCOVERV



C4-VKCCS



C4-VKACS



C4-VKSCOVERV



C4-VKCOVERV



C4-VKCOVERV-HG



C4-VKCOVERV-LL



C4-VKCOVERV-LLHG



C4-VKCOVERV-LLSB



C4-VKCOVERV-LLVS



C4-VKCOVERV-LL200

Baskets, Shafts and Paddles

Chrom4 offers both clip-on style and O-ring style baskets & basket shafts for most dissolution baths. Both meet the associated original equipment manufacturers dimensional specifications. Both clip style and O-ring style baskets comply with USP (711) specifications. All Chrom4 baskets are made from electropolished, sintered 316 stainless steel. The sintering process essentially creates a welded joint at each overlapping wire junction. Sintered baskets are stronger and last longer. They retain original dimensions and geometry and resist wobble. Clip-on style shafts utilize a proprietary, spring tempered clip, which retains the original gripping tension far longer than conventional shafts.

Chrom4 offers electropolished 316 stainless steel paddles.

Clip style and O-ring style shafts & paddles are precisely manufactured to limit rotational wobble to levels far below USP (711) specifications.



C4-DKBSK040

NEW
Sotax Basket Shafts
and paddles
Now Available



C4-SXBSKSH

Ordering Information - Baskets

Part No. (each)	Description	OEM Ref
Distek		
C4-DKBSK010	10 Mesh Stainless Steel Basket	2821-0160
C4-DKGBSK010	10 Mesh Stainless Steel Basket, Gold coated	2821-0160 G
C4-DKCBSK010	10 Mesh Stainless Steel Basket, Evolution Series	2800-0041
C4-DKBSK020	20 Mesh Stainless Steel Basket	2821-0159
C4-DKGBSK020	20 Mesh Stainless Steel Basket, Gold coated	2821-0159 G
C4-DKCBSK020	20 Mesh Stainless Steel Basket, Evolution Series	2800-0042
C4-DKBSK040	40 Mesh Stainless Steel Basket	2821-0072
C4-DKGBSK040	40 Mesh Stainless Steel Basket, Gold coated	2821-0072 G
C4-DKBSK040ES	40 Mesh Stainless Steel Basket, Evolution Series	2800-0032
C4-DKBSKPT40	40 Mesh PTFE Coated Basket	-
C4-DKCBSK150	150 Mesh Stainless Steel Basket, Evolution Series	-
C4-DKCBSKSUP	Suppository Basket, Plastic	3250-0445



C4-DKBSK010 C4-DKCBSK010 C4-DKBSK020 C4-DKCBSK020



C4-DKBSK040 C4-DKBSK040ES C4-DKCBSKSUP

Part No. (each)	Description	OEM Ref
Hanson		
C4-HRBSK010	10 Mesh Stainless Steel Basket	65-220-010
C4-HRBSK010	10 Mesh Stainless Steel Basket, Gold coated	-
C4-HRBSK020	20 Mesh Stainless Steel Basket	65-220-020
C4-HABSK040	40 Mesh Stainless Steel Basket	65-220-000
C4-HABSKPT40	40 Mesh PTFE Coated Basket	-
C4-HABSK040G	40 Mesh Stainless Steel Basket, Gold coated	-
C4-HRBSK150	150 Mesh Stainless Steel Basket	-
C4-HRBSKSUP	Suppository Basket, Plastic	65-700-048



C4-HRBSK010 C4-HRBSK020 C4-HABSK040



C4-HABSKPT40 C4-HRBSKSUP

Ordering Information - Baskets (continued)

Part No. (each)	Description	OEM Ref
Sotax		
PSBSK010-SX	10 Mesh Stainless Steel Basket	–
PSBSK010-SXG	10 Mesh Stainless Steel Basket, Gold coated	–
PSBSK020-SX	20 Mesh Stainless Steel Basket	9353
PSBSK040-SX	40 Mesh Stainless Steel Basket	2830
PSKSB040-SXG	40 Mesh Stainless Steel Basket, Gold coated	–
PSBSK150-SX	150 Mesh Stainless Steel Basket	–
PSBSKSUP-SX	Suppository Basket, Plastic	–

Other basket and basket shaft sizes and styles available. Paddles are also available in different sizes and PTFE coated or molded PTFE. Please enquire.



Part No. (each)	Description	OEM Ref
Agilent (Varian/Vankel)		
C4-VKBSK010	10 Mesh Stainless Steel Basket	12-2125
C4-VKBSK020	20 Mesh Stainless Steel Basket	12-2120
C4-VKBSK040	40 Mesh Stainless Steel Basket	12-2100
C4-VKBSK040-G	40 Mesh Stainless Steel Basket, Gold coated	12-2105
C4-VKBSKPL040	40 Mesh Precision Length Stainless Steel Basket	–
C4-VKBSKPT40	40 Mesh PTFE Coated Basket	12-2110
C4-VKBSK100	100 Mesh Stainless Steel Basket	12-2154
C4-VKBSK150	50x150 Mesh Stainless Steel Basket	12-2152
C4-VKBSKSUP	Suppository Basket, Plastic	12-2130



C4-VKSTABSK10	Stationary Basket Assembly with Basket Shaft and 10 Mesh Basket	12-2061
C4-VKSTABSK20	Stationary Basket Assembly with Basket Shaft and 20 Mesh Basket	12-2060
C4-VKSTABSK40	Stationary Basket Assembly with Basket Shaft and 40 Mesh Basket	12-2063

Other basket and basket shaft sizes and styles available. Paddles are also available in different sizes and PTFE coated or molded PTFE. Please enquire.



Dissolution Basket Storage

Prolong the life of baskets and save money

To ensure they meet USP requirements, it is essential that for all tests, baskets are not bent or deformed. The chances of accidentally damaging baskets can be significantly reduced with the use of a good quality basket holder, such as C4-SDBH-12.

Key Benefits:

- Compatible with all popular basket types (Caleva, Distek, Erweka, Hanson, Pharmatest, Sotax, VanKel, Zymark)
- O-rings ensure baskets are held firmly to the holder
- Stores up to 12 baskets
- Fully stackable, letting you transport many baskets at a time
- Low cost, it pays for itself by preventing damage to just one basket!

Ordering Information - Dissolution Baskets Storage

Part No. (each)	Description	OEM Ref
C4-SDBH-12	Stackable Dissolution Basket Holder, 12 Position	–

Baskets Shafts

Ordering Information - Basket Shafts

Part No. (each)	Description	OEM Ref
Distek		
C4-DKBSPOS	16.5" (420mm) O-Ring Style Basket Shaft	2821-0074
C4-DKBSSCS	16.5" (420mm) Spring Clip Style Basket Shaft	-
C4-BSDRNG-19	19" (480mm) O-Ring Style Basket Shaft	2821-0097

C4-DKDS	16.5" (420mm) Detachable Shaft	2800-0165
C4-DKBSKHUB	Basket Adaptor, O-Ring Style	2851-1052
C4-DKBAES	Basket Adaptor, Evolution Series Only	3200-0038
C4-DKBCES	Basket Clip, Evolution Series Only	3100-0017

Part No. (each)	Description	OEM Ref
Hanson		
C4-VKBSSCS	15" (380mm) Spring Clip Style Basket Shaft	65-237-000
C4-VKBSKSH-21	21" (530mm) Spring Clip Style Basket Shaft, 2L	65-260-000

Part No. (each)	Description	OEM Ref
Agilent (Varian/Vankel)		
C4-VKBSSCSV	14.5" (330mm) Spring Clip Style Basket Shaft	12-2073
C4-VKBSSCS	15" (380mm) Spring Clip Style Basket Shaft	12-2070
C4-VKBSKSH-15G	15" (380mm) Gold plated lower 6", Spring Clip Style Basket Shaft	12-2085
C4-VKBSKSH-15C	15" (380mm) Spring Clip Style Conical Basket Shaft	12-2075
C4-VKBSCPOS	15" (380mm) O-Ring Style Conical Basket Shaft	12-2050
C4-VKBSKSH-19	19" (480mm) Spring Clip Style Basket Shaft	12-2080
C4-VKBSKSH-19G	19" (480mm) Gold plated lower 6", Spring Clip Style Basket Shaft	12-2086
C4-VKBSKSH-19C	19" (480mm) Clip style Conical Basket Shaft	12-2081
C4-VKBSKSH-19CO	19" (480mm) O-Ring style Conical Basket Shaft	-
C4-VKBSKSH-24	24" (610mm) Clip style Basket Shaft	12-2095

Part No. (each)	Description	OEM Ref
Sotax		
C4-SXBSKSH	Clip Style Basket shaft	7558
C4-SXBHUB-SA	Clip Style Basket hub with sample opening	5301



C4-DKDS



C4-DKBSKHUB



C4-VKBSSCS



C4-VKBSSCSV, C4-VKBSSCS, C4-VKBSKSH-19, C4-VKBSKSH-24



C4-VKBSKSH-15C, C4-VKBSKSH-19C



C4-VKBSKSH-19CO

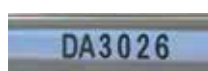


C4-SXBHUB-SA



C4-SXBSKSH

All basket shafts are laser marked with a unique serial number for easy identification



Paddles

Ordering Information - Paddles

Part No. (each)	Description	OEM Ref
Distek		
C4-DKEPD016	16.5" (420mm) Electropolished Paddle, 316 S.S.	2800-0010
C4-DKNPD016	16.5" (420mm) PTFE Coated Paddle, 316 S.S.	2800-0002
C4-DKTPD016	16.5" (420mm) Solid PTFE Paddle	2800-0178
C4-DKPDLBLD	Paddle Blade, screw on, 316SS	3251-1051
C4-DKDS	16.5" (420mm) Detachable Shaft, 316 S.S.	2800-0165

C4-DKTUMSCR	Thumb Screw for Distek Compatible Paddle Shafts	-
-------------	---	---

Part No. (each)	Description	OEM Ref
Hanson		
C4-HAPDE	16" (405mm) Electropolished Paddle, 316 S.S.	65-700-036
C4-HANPD016	16" (405mm) PTFE Coated Paddle, 316 S.S.	65-700-030
C4-HATPD016	16" (405mm) Solid PTFE Paddle	72-800-456
C4-HATPD018	18" (460mm) Solid PTFE Paddle	72-800-461

Part No. (each)	Description	OEM Ref
Agilent (Varian/VanKel)		
C4-EPD013	14.5" (370mm) Electropolished Paddle 316 S.S. for 7025/7030 series	12-1035
C4-VKPDSE	15" (380mm) Electropolished Paddle 316 S.S. for 7000/7010 series	12-1030
C4-VKEPD019-01	19" (485mm) Electropolished Paddle 316 S.S. for 7000/7010/705/708/709-DS series	12-1040
C4-VKEPD024	24" (610mm) Electropolished Paddle 316 S.S. for 7000/7010/705/708/709-DS series	12-1318
C4-VKNPD013	14.5" (370mm) PTFE Coated Paddle 316 S.S. for 7025/7030 series	12-1005
C4-VKNPD0151	15" (380mm) PTFE Coated Paddle 316 S.S. for 7000/7010 series	12-1000
C4-VKNPD019	19" (485mm) PTFE Coated Paddle 316 S.S. for 7000/7010/705/708/709-DS series	12-1010



C4-DKPDLBLD



C4-DKTUMSCR

All paddles are laser marked with a unique serial number for easy identification.

Part No. (each)	Description	OEM Ref
Sotax		
C4-SXPDS	Electropolished Paddle 316 S.S.	7525
C4-SXPADHUB	Paddle Electropolished 316 S.S with sample opening	2985-2



PTFE COATED PADDLE (NPD SERIES)

SOLID PTFE PADDLE (TPD SERIES)

POLISHED STAINLESS STEEL PADDLE (EPD SERIES)



C4-SXPDS

Sampling Cannula and Cannula Filters

Chrom4 offers traditional manual and automated sampling cannula for most dissolution baths. In addition to “traditional” cannula, Chrom4 offers an extensive selection of “innovative”, DE designed cannula. These cannula include PEEK cannula, improved filter housing cannula and a low cost cannula which offers significant cost savings without sacrificing quality.

Probe tip filters for most sampling methods are available in numerous micron ratings (from 1um to 70um) and they are available in packs of 1000 or 100. These filters are made from inert, high-density polyethylene. All Chrom4 filters have been specifically formulated to provide the specified micron ratings. All formulations have been verified by porisometer testing.

Ordering Information - ChromFlo

Part No. (each)	Description	SUN-SRI Equivalent
C4-PL010	10 Micron Porous Filters, (JAR/1000)	400105
C4-PL035	35 Micron Porous Filters, (JAR/1000)	400102
C4-PL070	70 Micron Porous Filters, (JAR/1000)	400107

Why Choose Porous PE Dissolution Filters?

Chrom4 Dissolution Filters help deliver precision, accuracy and reliability to meet the most challenging dissolution applications. The unique structural characteristics of lightweight, porous materials result in design flexibility and long-term value advantages. Fabricated from polyethylene (PE) and ultra-high molecular weight polyethylene (UHMWPE), dissolution filters are available in cannula, disc and tips configurations. Chrom4 Dissolution Filters provide superior resiliency for a good compression fit and a strong, durable construction to withstand the rigors of automated equipment assembly. Additionally, this media is chemically-resistant to withstand most acids and bases and has an excellent appearance for a quality image.

Dissolution testing is a critical performance measurement in pharmaceutical tablet and capsule products. Used to determine the bioequivalence and absorption in the human body with in vitro-in vivo correlations, dissolution testing is conducted in apparatuses under a variety of test conditions according to the nature of the dosage form. Dissolution testing equipment removes, filters and collects sample aliquots for further analysis. Chrom4 Dissolution Media - cannula filters, filter discs and filter tips - are used to help filter contaminants and facilitate testing.



Cannula Filters

Manufactured from porous UHMWPE, Cannula Filters are used on the end of a sampling cannula and feature a large surface area and optimized flow rate for an ideal choice in applications with a high presence of particulates. Cannula Filters are available in 1, 4, 5, 10, 20, 35 and 70 micron sizes.



Filter Discs

Manufactured from porous PE, Filter Discs are circular filters used with low-dimension sample probes in applications where it is important to keep the filtration process outside of the vessel. Filter Discs are available in 10 and 45 micron sizes.



Filter Tips

Manufactured from porous PE, Filter Tips are used with low quantities of particulates and flow at the filter bottom. Filter Tips are available in 2, 5, 10, 20 and 45 micron sizes and can be used on sample cannulas with 1/6" diameter.

Ordering Information - Sampling Cannula Filters

Part No. (each)	Description	Qty	OEM Ref
Distek			
C4-DKFD010	10µm Filter Discs, UHMW Polyethylene	1000	5720-0203
C4-DKFD045	45µm Filter Discs, UHMW Polyethylene	1000	5720-0275
C4-DKFIL070	70µm Filter Discs, UHMW Polyethylene	1000	–
C4-DKFIL090	90µm Filter Discs, UHMW Polyethylene	1000	–
C4-DKFIL01S-100 C4-DKFIL01S	1µm Cannula Filters, 1/16" (1.6mm) ID, UHMW Polyethylene	100 1000	– –
C4-DKFIL04S-100 C4-DKFIL04S	4µm Cannula Filters, 1/16" (1.6mm) ID, UHMW Polyethylene	100 1000	– –
C4-DKFIL010-100 C4-DKFIL010	10µm Cannula Filters, 1/16" (1.6mm) ID, UHMW Polyethylene	100 1000	5720-0500 5720-0501
C4-DKFIL20S-100 C4-DKFIL20S	20µm Cannula Filters, 1/16" (1.6mm) ID, UHMW Polyethylene	100 1000	– –
C4-DKFIL35S-100 C4-DKFIL35S	35µm Cannula Filters, 1/16" (1.6mm) ID, UHMW Polyethylene	100 1000	5720-0220-100 5720-0220-1000
C4-DKFIL45S-100 C4-DKFIL45S	45µm Cannula Filters, 1/16" (1.6mm) ID, UHMW Polyethylene	100 1000	5720-0020-100 5720-0020-1000
C4-DKFIL70S-100 C4-DKFIL070	70µm Cannula Filters, 1/16" (1.6mm) ID, UHMW Polyethylene	100 1000	5720-0502 5720-0503

Distek tablet dissolution baths utilise a narrow sample probe that incorporates a small filter disc at the top. As these small filters can become blocked, an external filter at the end of the sample probe may be used instead of, or in addition to the filter disc.

Cannula Filter

Colour Coding

Cannula filters are colour coded for easy identification of porosity.



Distek Filter Disc



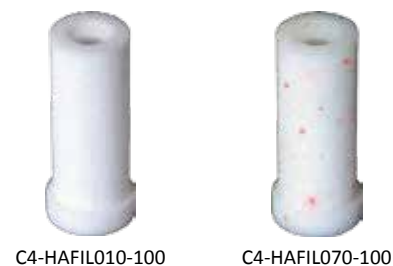
Distek Cannula Filter



Ordering Information - Sampling Cannula Filters

Part No. (each)	Description	Qty	OEM Ref
Hanson			
C4-HAFIL001-100 C4-HAFIL001-1000	1µm Cannula Filters, UHMW Polyethylene	100	27-101-087
		1000	27-101-097
C4-LGFIL004-100 C4-LGFIL004	4µm Cannula Filters, UHMW Polyethylene	100	27-101-088
		1000	27-101-098
C4-HAFIL010-100 C4-HAFIL010	10µm Cannula Filters, UHMW Polyethylene	100	27-101-074
		1000	27-101-091
C4-HAFIL020-100 C4-HAFIL020	20µm Cannula Filters, UHMW Polyethylene	100	–
		1000	–
C4-HAFIL035-100 C4-HAFIL035	35µm Cannula Filters, UHMW Polyethylene	100	27-101-085
		1000	27-101-095
C4-HAFIL045-100 C4-HAFIL045	45µm Cannula Filters, UHMW Polyethylene	100	27-101-089
		1000	–
C4-HAFIL070-100 C4-HAFIL70	70µm Cannula Filters, UHMW Polyethylene	100	27-101-082
		1000	27-101-092
C4-HAFIL10S-100 C4-HAFIL010-16	10µm Cannula Filters, 1/16" (1.6mm) ID, UHMW Polyethylene	100	27-101-083
		1000	27-101-093
C4-HAFIL35S-100 C4-HAFIL35S	35µm Cannula Filters, 1/16" (1.6mm) ID, UHMW Polyethylene	100	27-101-086
		1000	27-101-096
C4-HAFIL45S-100 C4-HAFIL045-16	45µm Cannula Filters, 1/16" (1.6mm) ID, UHMW Polyethylene	100	27-101-090
		1000	–
C4-HAFIL70S-100 C4-HAFIL70S	70µm Cannula Filters, 1/16" (1.6mm) ID, UHMW Polyethylene	100	27-101-084
		1000	27-101-094

Hanson Research dissolution baths normally use cannula style filters. The Hanson/Waters Dissolution/HPLC Interface uses a narrow bore (1/16" ID) filter instead of the normal cannula diameter. Both types are supplied, as listed below.



C4-HAFIL010-100

C4-HAFIL070-100



C4-HAFIL10S-100

Ordering Information - Sampling Cannula Filters

Part No. (each)	Description	Qty	OEM Ref
Sotax			
C4-STFIL001-100 C4-STFIL001	1µm Cannula Filters, UHMW Polyethylene	100	–
		1000	–
C4-STFIL004-100 C4-STFIL004	4µm Cannula Filters, UHMW Polyethylene	100	–
		1000	–
C4-STFIL010-100 C4-STFIL010	10µm Cannula Filters, UHMW Polyethylene	100	–
		1000	–
C4-STFIL020-100 C4-STFIL020	20µm Cannula Filters, UHMW Polyethylene	100	–
		1000	–
C4-STFIL035-100 C4-STFIL035	35µm Cannula Filters, UHMW Polyethylene	100	–
		1000	–
C4-STFIL070-100 C4-STFIL070	70µm Cannula Filters, UHMW Polyethylene	100	–
		1000	–

Sotax dissolution baths use a closed design. For manual and automatic sampling it is necessary to mount the sampling cannula through the drive head of the bath. This allows the use of cannula filters.



C4-STFIL035-100

Ordering Information - Sampling Cannula Filters

Part No. (each)	Description	Qty	OEM Ref
Agilent (Varian/Vankel)			
C4-VKFIL001-100 C4-VKFIL001	1µm Cannula Filters, UHMW Polyethylene	100	-
		1000	-
C4-VKFIL004-100 C4-VKFIL004	4µm Cannula Filters, UHMW Polyethylene	100	-
		1000	-
C4-VKFIL001DF-100 C4-VKFIL001DF	1µm Direct Fit Cannula Filters (no Tygon Tubing needed), UHMW Polyethylene	100	-
		1000	-
C4-VKFIL004DF-100 C4-VKFIL004DF	4µm Direct Fit Cannula Filters (no Tygon Tubing needed), UHMW Polyethylene	100	-
		1000	-
C4-VLFIL010-100 C4-VKFIL010	10µm Cannula Filters, UHMW Polyethylene	100	17-4000
		1000	
C4-VKFIL010DF-100 C4-VKFIL010DF	10µm Direct Fit Cannula Filters (no Tygon tubing needed), UHMW Polyethylene	100	-
		1000	-
C4-VKFIL020DF-100 C4-VKFIL020	20µm Cannula Filters, UHMW Polyethylene	100	-
		1000	-
C4-VKFIL035DF-100 C4-VKFIL035	35µm Cannula Filters, UHMW Polyethylene	100	17-4010
		1000	
C4-VKFIL035-100 C4-VKFIL035	35µm Direct Fit Cannula Filters (no Tygon tubing needed), UHMW Polyethylene	100	-
		1000	-
C4-VKFIL045DF-100 C4-VKFIL045	45µm Cannula Filters, UHMW Polyethylene	100	-
		1000	-
C4-VKFIL070-100 C4-VKFIL070	70µm Cannula Filters, UHMW Polyethylene	100	17-4020
		1000	
C4-VKFIL070-100 C4-VKFIL070	70µm Direct Fit Cannula Filters (no Tygon tubing needed), UHMW Polyethylene	100	-
		1000	-
C4-VKFILTIP02	2µm Filter Tips	1000	17-4100
C4-VKFILTIP05	5µm Filter Tips	1000	17-4110
C4-VKFT010	10µm Filter Tips	1000	17-4120
C4-VKFILTIP20	20µm Filter Tips	1000	17-4130
C4-VKFT045	45µm Filter Tips	1000	17-4140

Agilent baths normally use either cannula style filters or filter tips. The filter tips fit on the end of larger diameter sample probes



C4-VKFT045



C4-VLFIL010-100



C4-VKFIL035DF-100



C4-VKFIL070-100

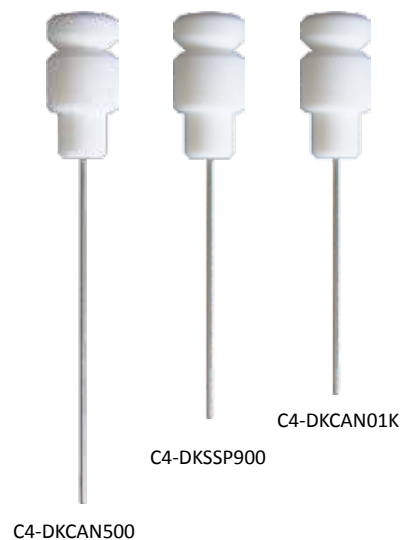
Ordering Information - Compatible Sampling Cannula

Part No. (each)	Description	OEM Ref
Sotax		
C4-SXCANLA	330mm (13") Bent Stainless Steel Cannula with Luer Adapter, Through Head Mount	--
C4-SXCANST5	330mm (13") Stainless Steel Cannula, Including Stopper and Sleeve, for 500ml Sampling	-
C4-SXCANST5	330mm (13") Stainless Steel Cannula, Including Stopper and Sleeve, for 900ml Sampling	-
C4-SXSRCANFH	Combined Sample/Return Cannula with Filter Housing	-
C4-SXSRCANNFH	Combined Sample/Return Cannula without Filter Housing	-
C4-PRBF5R-5S	500ml Sample/Return Probe Fixed with Filter Housing, Stopper & Up/Down Collars	-
C4-SXSR9HSC	900ml Sample/Return Probe Fixed with Filter Housing, Stopper & Up/Down Collars	-
C4-SXCANSTP	Adjustable Cannula Stopper	-
C4-SXCANSTPV	Validation Stopper (two holes for manual and auto cannulae)	-



Ordering Information - Sampling Cannula

Part No. (each)	Description	OEM Ref
Distek		
C4-DKCAN500	500ml Sampling Probe	2910-0500
C4-DKSSP900	900ml Sampling Probe	2910-0900
C4-DKCAN01K	1000ml Sampling Probe	2910-1000
C4-DK16CAN5PK	500ml PEEK Sampling Probe, 1/16" (1.6mm) OD	-
C4-DKCAN9PK-8	900ml PEEK Sampling Probe, 1/8" (3.2mm) OD	-
C4-DKCANRET	Return Probe	2910-0001
C4-DKCAN-STP-065-53	Distek/Hanson 1/16" (1.6mm) Self-Tightening Cannula Stopper for Distek Covers	-
C4-DKFILASY	Inline Filter Housing Assembly for Distek Style Filters	-
C4-LE87-6	Male Luer to Female Luer, Thread Style Elbow	5720-9074
C4-6SFLL	Female Luer Lug Style with 5/16" Hex to 1/4-28 UNF Thread	5720-9059
C4-SMTLL-6	Male Luer Integral Lock Ring to 1/4-28 UNF Thread	5720-9060



Ordering Information - Compatible Sampling Cannula

Part No. (each)	Description	OEM Ref
Hanson		
C4-HACANPT	4.75" (120mm) Bent Stainless Steel Cannula with Luer Adapter and Permanent Tip	-
C4-HRCAN775	7.75" (195mm) Bent Stainless Steel Cannula with Luer Adapter and Permanent Tip	-
C4-HRCAN015	15" (380mm) Bent Stainless Steel Cannula, 1/8" (3.2mm) OD, 0.085" (2.2mm) ID	72-300-304
C4-HACAN	4.75" (120mm) Bent Stainless Steel Cannula with Luer Adapter, for 900ml Manual Sampling, 1/8" (3.2mm) OD	95-590-002
C4-HACAN775	7.75" (195mm) Bent Stainless Steel Cannula with Luer Adapter, for 500ml Manual Sampling, 1/8" (3.2mm) OD	95-590-001
C4-SHCAN015	15" (380mm) Bent Stainless Steel Cannula with Luer Adapter, Through Head Mount, 1/8" (3.2mm) OD	95-590-003
C4-SHCANS15	15" (380mm) Straight Stainless Steel Cannula with Luer Adapter, Through Head Mount, 1/8" (3.2mm) OD	-
C4-HACANPEEK	4.75" (120mm) Bent PEEK Cannula with Luer Adapter, for 900ml Manual Sampling, 1/8" (3.2mm) OD	95-590-005
C4-PHCAN775	7.75" (195mm) Bent PEEK Cannula with Luer Adapter, for 500ml Manual Sampling, 1/8" (3.2mm) OD	95-590-004
C4-PHCAN015	15" (380mm) Bent PEEK Cannula with Luer Adapter, Through Head Mount, 1/8" (3.2mm) OD	95-590-006
C4-PHCANS15	15" (380mm) Straight PEEK Cannula with Luer Adapter, 1/8" (3.2mm) OD	-
C4-HACANSTP-065-53	Distek/Hanson 1/16" (1.6mm) Self-Tightening Cannula Stopper for Distek Covers	-
C4-VKCANSTP-31-125	Hanson 1/8" (3.2mm) OD Self-Tightening Cannula Stopper for VanKel Covers	-
C4-DKCANSTP125	Hanson 1/8" (3.2mm) OD Self-Tightening Cannula Stopper for Distek Covers	-
C4-HRTUMSCR	Adjustable Cannula Stopper (for use with all 15" (380mm) cannulae)	-



C4-HACANSTP-065-53



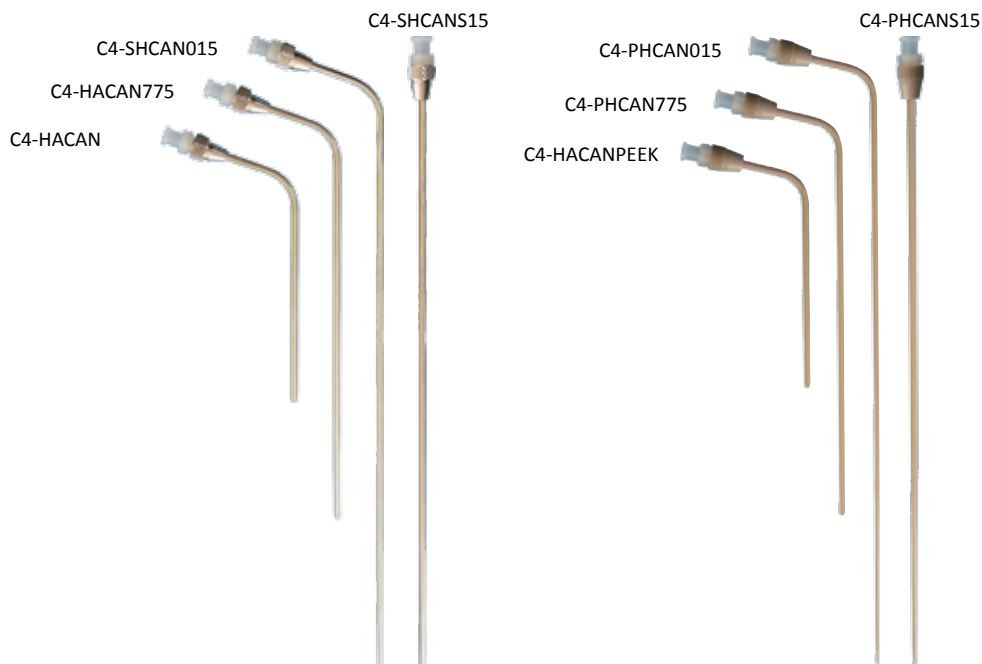
C4-HRTUMSCR



C4-VKCANSTP-31-125



C4-HACANSTP-065-53



Ordering Information - Compatible Sampling Cannula

Part No. (each)	Description	OEM Ref
Agilent (Varian/Vankel)		
C4-VKCAN	4.75" (120mm) bent S.S. cannula with luer adapter, for 900ml sampling, 0.083" (2.1mm) OD	12-3200
C4-VKCAN775	7.75" (195mm) bent S.S. cannula with luer adapter, for 500ml sampling, 0.083" (2.1mm) OD	12-3210
C4-VKCA8475	4.75" (120mm) bent S.S. cannula with luer adapter, for 900ml sampling, 1/8" (3.2mm) OD	-
C4-VKCA8775	7.75" (195mm) bent S.S. cannula with luer adapter, for 500ml sampling, 1/8" (3.2mm) OD	-
C4-VKCA8015	15" (380mm) bent S.S. cannula with luer adapter, through head mount, 1/8" (3.2mm) OD	-
C4-VKCA8475P	4.75" (120mm) bent PEEK cannula with luer adapter, for 900ml sampling, 1/8" (3.2mm) OD	-
C4-PVCA8775	7.75" (195mm) bent PEEK cannula with luer adapter, for 500ml sampling, 1/8" (3.2mm) OD	-
C4-PVCA8015	15" (380mm) bent PEEK cannula with luer adapter, through head mount, 1/8" (3.2mm) OD	-
C4-CANRET25	2.5" (65mm) Autosampling Return Cannula	17-3320
C4-VKCANAS	4.5" (115mm) Autosampling Cannula	17-3300
C4-CAN500-60	6.5" (165mm) Autosampling Cannula	17-3305
C4-VKPROBEX	500ml Cannula Extension Kit	17-3306
C4-VKCANSTP-31-078	VanKel Standard Self-Tightening Cannula Stopper for VanKel Covers	-
C4-VKCANSTP-31-125	VanKel 1/8" (3.2mm) OD Self-Tightening Cannula Stopper for VanKel Covers	-



C4-VKPROBEX



C4-VKCANSTP-31-078



C4-VKCANSTP-31-125



Sinkers, Basket Shafts and Vessel Stands

CHROM4 offers the most extensive selection of tablet and capsule sinkers available from a single source. Their family of sinkers includes most configurations currently in use worldwide, including helical style, basket style, three-prong style and others.

C4-VKPCS



C4-VKBSK-JP



Ordering Information - Sinkers

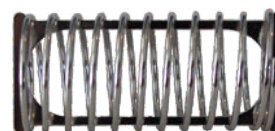
Part No. (each)	Description	OEM Ref
Agilent (Varian/Vankel)		
C4-VKPCS	3 Prong Capsule Sinker, Plastic	12-3050
C4-VKBSK-JP	Japanese Pharmacopeia Basket Sinker	12-3070
Sotax		
C4-SXSSCS-4	4 Spring Style Capsule Sinker, 316 SS	8280
C4-SXSSCS-5	5 Spring Style Capsule Sinker, 316 SS	7346
C4-SXSSCS-6	6 Spring Style Capsule Sinker, 316 SS	8283
C4-SXSSCS-7	7 Spring Style Capsule Sinker, 316 SS	6881
C4-SXSSCS-10	10 Spring Style Capsule Sinker, 316 SS	7349
C4-SXORS	O-Ring Sinker, 316 SS	8399



C4-SXSSCS-4



C4-SXSSCS-6



C4-SXSSCS-10



C4-SXSSCS-7

Basket Shafts/Paddle Holders

Ideal for both basket shaft and paddle storage.

Key Benefits:

- Prevents shafts/paddles from becoming bent or scratched
- Allows quick and easy transport of many shafts/paddles
- Handy end plate to stop shafts/paddles sliding out when carrying

- Holds all lengths and types of basket shafts and paddles
- Non-corrosive, quality plastic construction
- Space-saving, attractive design
- Available in both 12 and 16 shaft capacities



Ordering Information - Paddle Holder

Part No. (each)	Description
C4-PDLHD-12	12 Piece Dissolution Paddle Holder

Universal Vessel Stands

For the safe transportation and storage of vessels.

Due to their shape, dissolution vessels are difficult to hold securely. This can often result in scratched, chipped or even smashed vessels. The steel/acrylic stands are available in 6 or 8

vessel capacities and can hold vessels from any dissolution bath manufacturer.

They can also be stacked together to save bench space and enable you to transport many vessels at a time.

Part No. (each)	Description
C4-UVS-6	Vessel Stand, 6 Position
C4-UVS-8	Vessel Stand, 8 Position



Quartz Spectrophotometer Cells

Chrom4 Quartz Cuvettes (cells) and Glass Cells

Chrom4 manufacturing, has many years experience in the production of accessories for UV-Vis-NIR spectroscopy to meet all standard procedures found in analytical, clinical and research laboratories, especially QA environments.

A wide range of cells specifically designed for spectrophotometers are available from path lengths of 1mm through to 100mm.

Quartz Cells

- Traceable
- Calibrated
- Certified reference material



What is calibration?

Calibration is the process of establishing how the response of a measuring device varies with respect to the instrument parameter being measured. The usual way to perform calibration is to measure the parameter (e.g. using a reference material) and monitor the instrument response.

There are three basic designs of aperture. Path lengths below 1mm are measured interferometrically. The rectangular cells are serial numbered and fully traceable.



Why is calibration important?

Place any equipment in the environment of choice, and immediately the chosen environment will begin to act on that equipment causing change and ultimately degradation in performance. This so called drift causes your results to become unreliable and no longer “fit for their intended purpose”. While drift cannot be eliminated it can be detected and contained through the process of calibration. In the pharmaceutical industry, a system where drift has occurred to an unacceptable level is deemed to be “out of control”.

By inference, this same environment will also act on your Certified Reference Materials, depending on how they are stored, etc. These materials must be checked/re-certified to ensure that the values on which you are depending have not also significantly changed.

Ordering Information - Quartz Cells and Reference Standards

For Agilent, Buck Scientific, Hitachi, Jasco, Shimadzu, Thermo Scientific and PerkinElmer

Part No. (each)	Description
Rectangular Cells	
C4QC-1	1 mm UV Quartz Cell
C4QC-2	2 mm UV Quartz Cell
C4QC-5	5 mm UV Quartz Cell
C4QC-10	10 mm UV Quartz Cell
C4QC-20	20 mm UV Quartz Cell
C4QC-40	40 mm UV Quartz Cell
C4QC-50	50 mm UV Quartz Cell
C4QC-100	100 mm UV Quartz Cell



Reference materials, Spectrophotometer Fluorimeter Colorimeter and flow cells soon available from Chrom4!



via neera 8/a 20141 Milano
 Tel. +39 02.8954201 - Fax +39 02.89542022
www.cps.it - cps@cps.it