

PFAS Analysis Related Product

Stacked SPE Cartridge for PFAS

Simplify EPA Method 1633 for PFAS Extraction

Superior PFAS Extraction

EPA Method 1633 establishes an efficient method for the determination of per- and polyfluoroalkyl compounds (PFAS) from samples containing complex matrices.

InertSep is a line of solid-phase extraction cartridges known for its high purity, consistency, and quality.

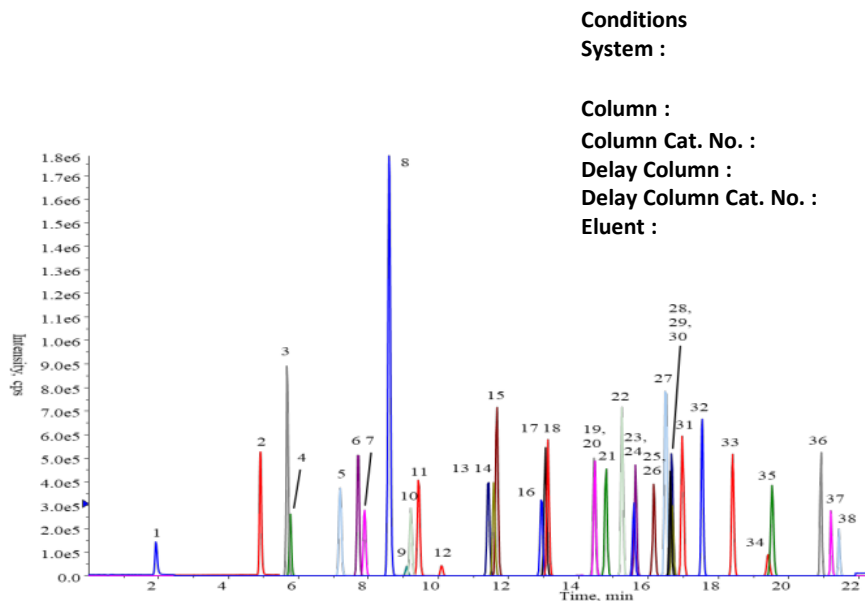
InertSep WAX FF and InertSep GCB for PFAS analysis boast high recovery rates and cleanup efficiencies from samples of aqueous, soil, food, and other complex matrices.

InertSep GCB, packed with Graphite Carbon Black, is ideal for LC/MS analysis due to its excellent cleanup efficiency.



Application

Chromatogram



Conditions

System :

Exion HPLC System (SCIEX)
QTRAP 6500+ LC-MS/MS System (SCIEX)
InertSustain AQ-C18 (1.9 μ m, 50 x 2.1mm I.D.)

Column :

Column Cat. No. :

5020-89938

Delay Column :

Delay Column for PFAS (30 x 3.0 mm I.D.)

Delay Column Cat. No. :

5020-90005

Eluent :

A) CH₃OH

B) 20 mmol/L CH₃COONH₄ in H₂O

Time (min)	A%	B%
0	5	95
0.5	5	95
3.0	40	60
16.0	80	20
18.0	80	20
20.0	95	5
22.0	95	5
25.0	5	95

Ordering Information

Descriptions	Size	Qty.	Cat.No.
InertSep WAX FF/GCB	200mg/50mg/6mL	30/pk	5010-68063
		300/pk	5010-68064
InertSep GCB/WAX FF	50mg/200mg/6mL	30/pk	5010-68065
		300/pk	5010-68066

GL Sciences disclaims any and all responsibility for any injury or damage which may be caused by this data directly or indirectly. We reserve the right to amend this information or data at any time and without any prior announcement. Please note that, in the interests of continuous improvement, models or specifications are subject to change without notice. Please also note that the company name and product name appearing in this catalogue are the trademark or registered trademark of each corresponding company. In the descriptions in this catalogue, TM and R marks are not used.



© GL Sciences Inc.
Published in Japan, May 10, 2024
SCBR0101EN



via neera 8/a 20141 Milano
Tel. +39 02.8954201 - Fax +39 02.89542022
www.cps.it - cps@cps.it