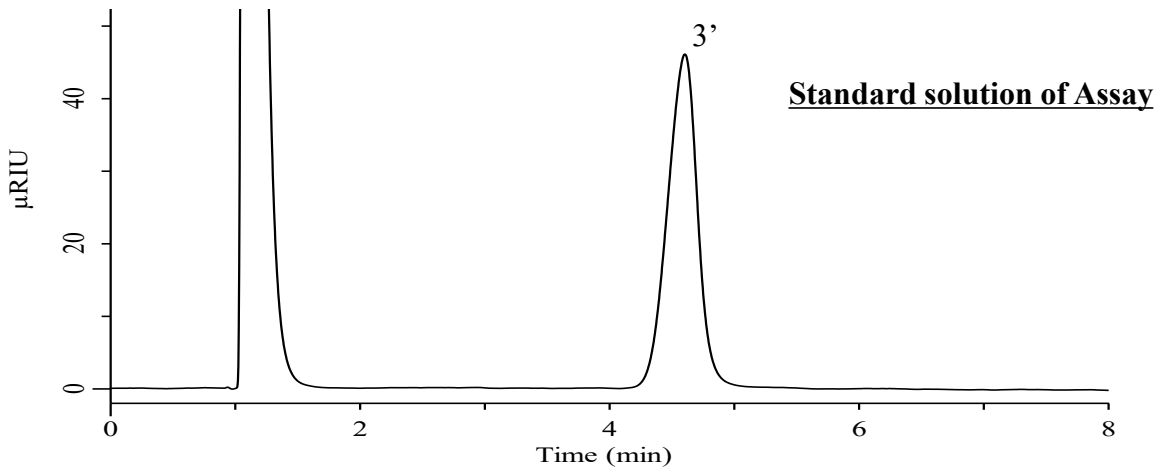
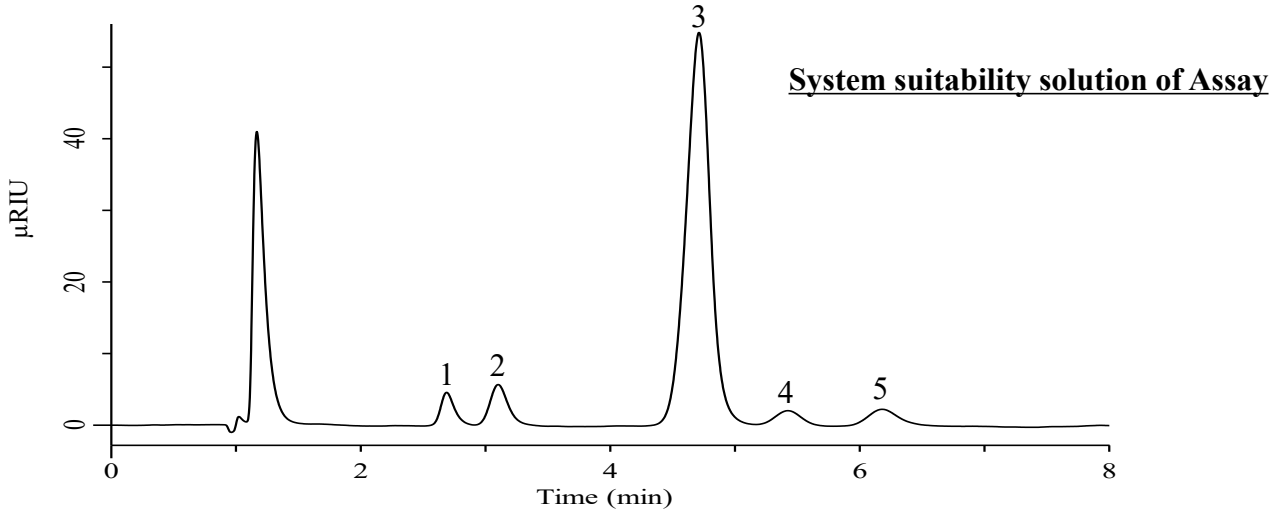


Analysis of Compressible Sugar

(Under the Condition of the USP43-NF38, Compressible Sugar, ASSAY)



Conditions

System : Chromaster PLUS (HITACHI)
Column : Inertsil NH2 (GL Sciences Inc.)
 (5 μm, 150 x 4.6 mm I.D.) with 100% CH₃CN
Column Cat. No. :
Eluent : 5020-89952
 A) CH₃CN
 B) H₂O
Flow Rate : A/B = 80/20
Col. Temp. : 2.0 mL/min
Detection : 45 °C
Injection Vol. : RI (Chromaster 5450 RI)
Sample : 15 μL
 System suitability solution in Eluent
 Standard solution in H₂O

Analyte:

1. Fructose	0.6 mg/mL
2. Glucose	1 mg/mL
3. Sucrose	20 mg/mL
4. Maltose	0.6 mg/mL
5. Lactose	0.8 mg/mL

Resolution

(1.2)	: 1.76 (≥ 1.3)
(2.3)	: 5.14 (≥ 1.3)
(3.4)	: 1.83 (≥ 1.3)
(4.5)	: 1.71 (≥ 1.3)

RSD of the peak area of 3' : 0.64 (≤ 2.0)
 (%)(n=6)