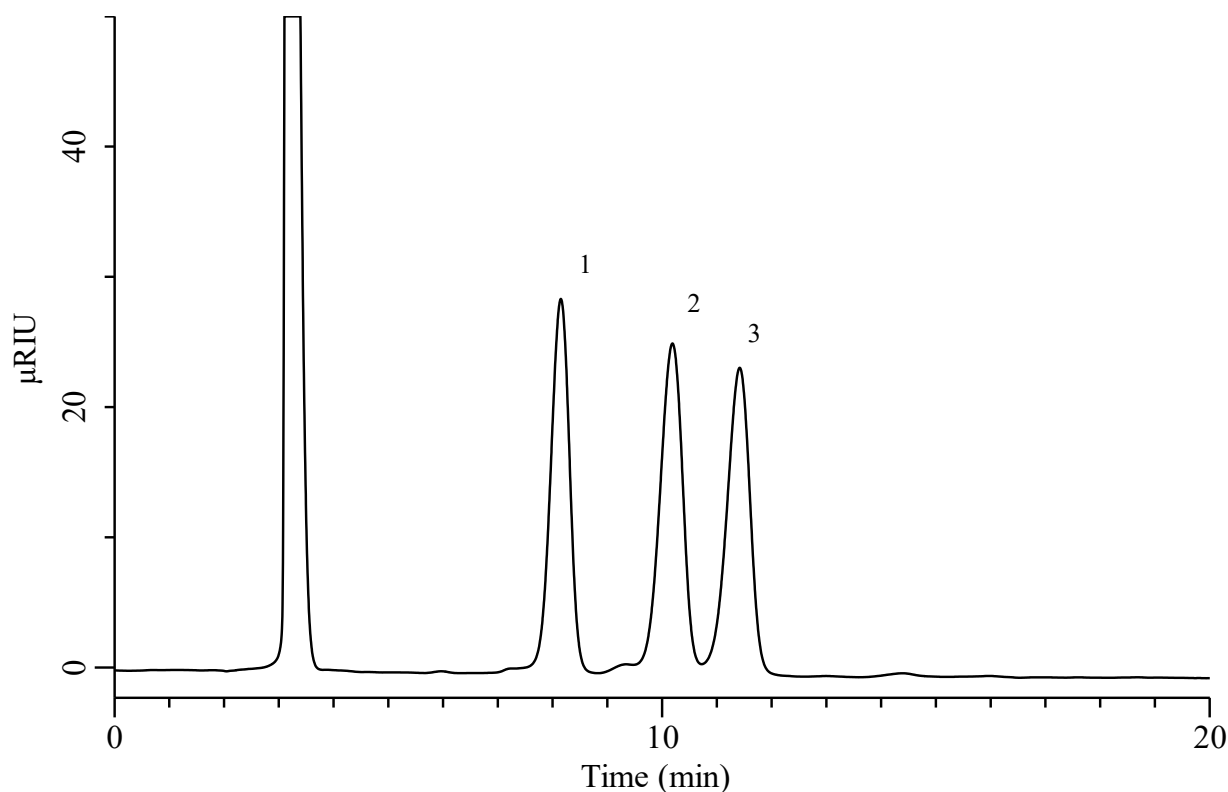


Analysis of Panose



Conditions

System : Chromaster PLUS HPLC system (HITACHI)
Column : InertSustain NH2 (GL Sciences Inc.)
 (5 μ m, 250 x 4.6 mm I.D.)
Column Cat. No. : 5020-89951
Eluent : A) CH₃CN
 B) H₂O
 A/B = 70/30, v/v
Flow Rate : 1.0 mL/min
Col. Temp. : 40 °C
Detection : RI
Injection Vol. : 50 μ L
Sample : Standard

Analyte:

1. Isomaltose	1000 mg/L
2. Panose	1000 mg/L
3. Isomaltotriose	1000 mg/L