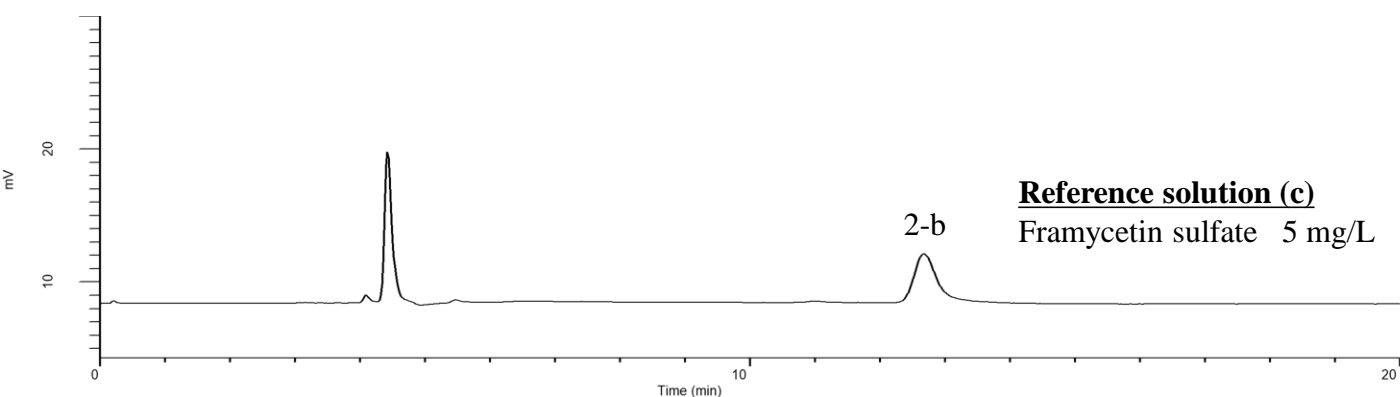
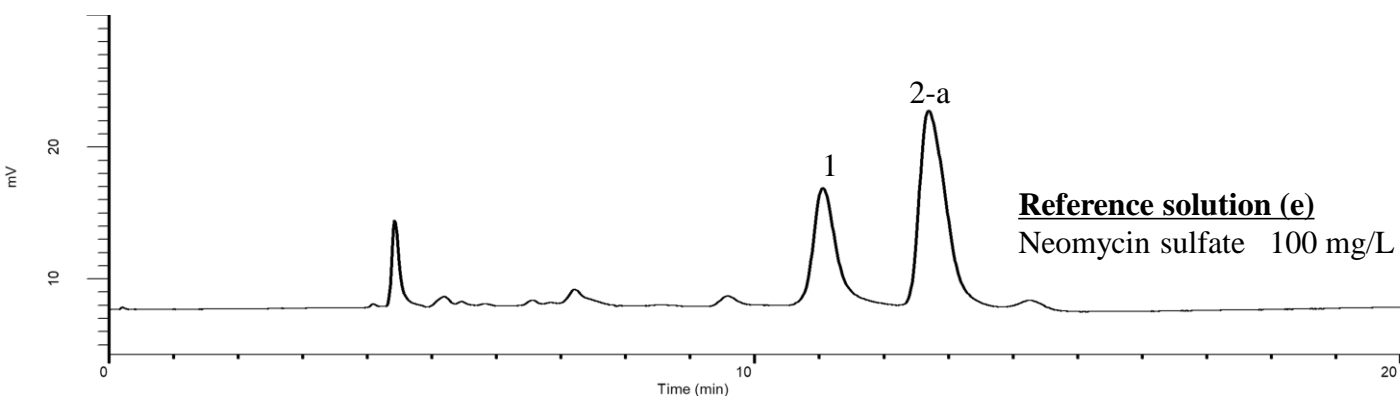


Analysis of Neomycin sulfate

(Under the Condition of European Pharmacopoeia 11.0)



Conditions

System : Chromaster HPLC system(HITACHI)
Column : InertSustain C18 (GL Sciences Inc.)
 (5 μ m, 250 x 4.6 mm I.D.)
Column Cat. No. : 5020-07346
Eluent : (2 % TFA + 0.3 % NaOH) in H₂O*
Flow Rate : 0.7 mL/min
Reaction Reagent : 0.5 M NaOH in H₂O**
Reaction Flow Rate : 0.5 mL/min
Col. Temp. : 25 °C
Detection : ECD Pulse Mode (ED743, Gold)

E1:	0 mV	t1:	400 ms
E2:	800 mV	t2:	100 ms
E3:	-600 mV	t3:	100 ms
E4:	0 mV	t4:	0 ms
		ts:	50 ms

Injection Vol. : 10 μ L
Sample : Standard

Analyte:

1. Neomycin C (Not qualitative)
2. Neomycin B

Resolution (1, 2-a) : 2.64 (\geq 2.0)
 Signal - to - noise ratio (2-b) : 58.8 (\geq 10)

*This condition may be slightly below the recommended usage pH range of the column. Therefore, it is recommended to thoroughly wash the column and replace it early.

**Do not flow the reaction reagent to the analytical column. It may deteriorate the analytical column rapidly.