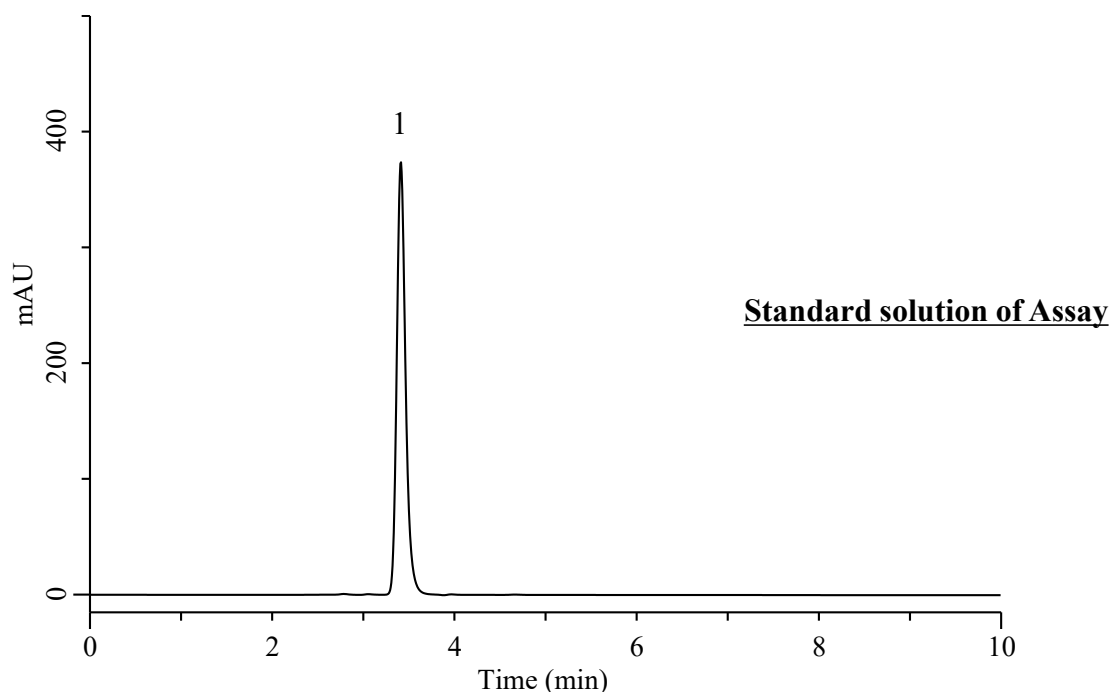


Analysis of Acyclovir

(Under the Condition of the draft for USP, Acyclovir Cream)



Conditions

| | | | |
|------------------------|---|---------------------------------------|----------------------|
| System | : Primaide HPLC system (HITACHI) | Analyte: | |
| Column | : InertSustain Cyano** (GL Sciences Inc.) (5 μ m, 150 x 4.6 mm I.D.) | 1. Acyclovir | 0.05 mg/mL |
| Column Cat. No. | : 5020-89276 | | |
| Eluent | : A) CH ₃ CN B) Solution* A/B = 4/96, v/v | Tailing factor | : 1.20 (\leq 2.0) |
| Flow Rate | : 0.6 mL/min | RSD of the peak area (%) (n=6) | : 0.11 (\leq 2.0) |
| Col. Temp. | : 35 °C | | |
| Detection | : UV 254 nm (1430 DAD) | | |
| Injection Vol. | : 10 μ L | | |
| Sample | : Standard | | |

* : Add 1.7 mL of phosphoric acid in 1000 mL of water and adjust with 1 M phosphoric acid to a pH of 1.8.

** : Applicable pH range is 2-7.5.

After use this condition, please wash and store the column for 100% organic solvent such as acetonitrile.