

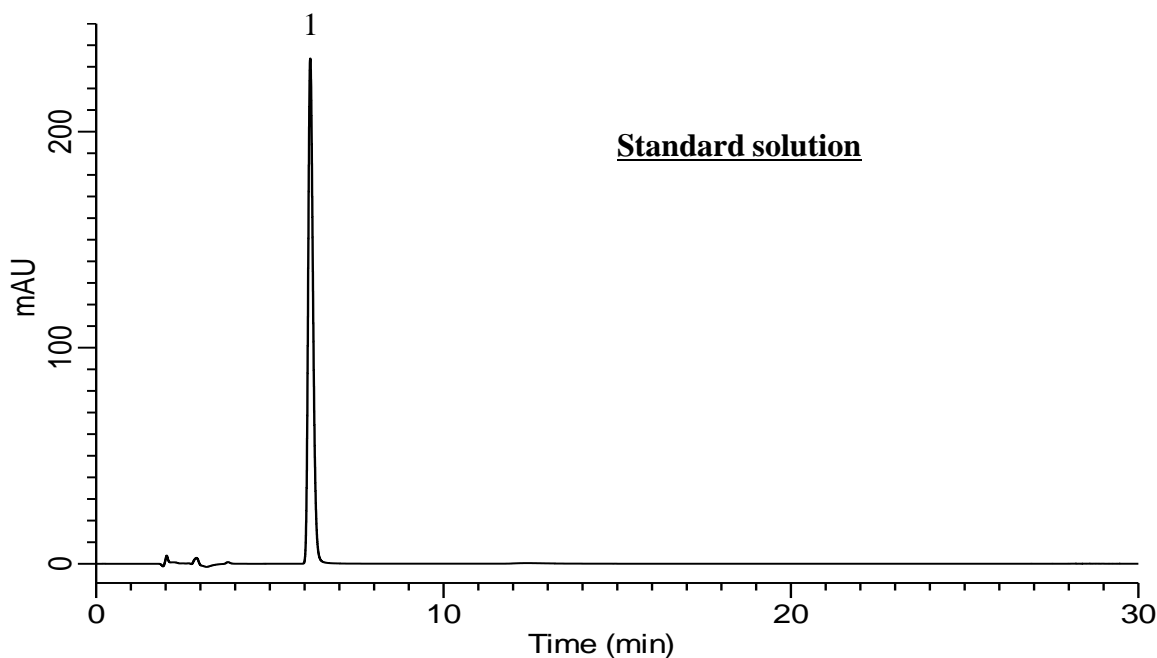
InertSearch for LC

Inertsil Applications

Analysis of Copovidone

(Under the Condition of European Pharmacopoeia 10.0, Impurity A)

Data No. LB660-0984



Conditions

System : GL7700 HPLC system
Guard Column : Inertsil ODS-4
(5 μ m, 10 x 4.0 mm I.D.)
Column Cat. No. : 5020-03651
Column : Inertsil ODS-4
(5 μ m, 150 x 4.6 mm I.D.)
Column Cat. No. : 5020-03945
Eluent : A) CH₃OH
B) H₂O
A/B = 5/95, v/v
Flow Rate : 0.8 mL/min
Col. Temp. : 40 °C
Detection : UV 205 nm (UV7750 UV Detector)
Injection Vol. : 20 μ L
Sample : Standard

Analyte:

1. 2-Pyrrolidone 45 mg/L

Symmetry factor : 1.27 (\leq 1.5)
RSD of the peak area (%) (n=6)
: 0.10 (\leq 2.0)